

# IP29 Pro-Style Island Hood



Shown: IP29 hood with optional flue kit.

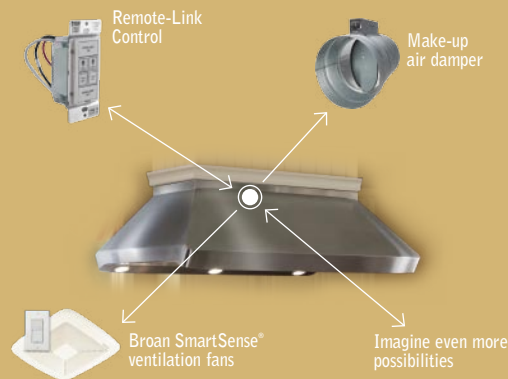
Take professional features, design details and technology to new heights. The IP29 is the first hood enabled with exclusive Intelligent Linking technology. It's ready to be in touch with other amenities in your home to provide a more comfortable environment.

**best**

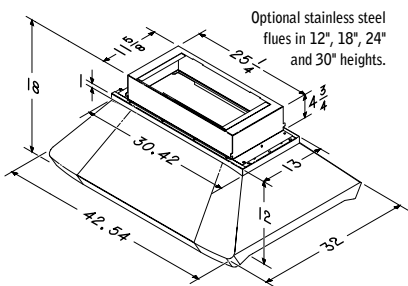
# IP29 Pro-Style Island Hood with Intelligent Linking

The IP29 is the first range hood ever to offer the exclusive, Intelligent Linking communication technology. It uses the popular INSTEON™ platform, and allows users to link enabled products throughout the home. Because the Intelligent Linking technology communicates over existing AC wires, no additional control wiring is needed. That means you can install a remote control module in any electrical box, link it with any enabled product and have remote operation that's ready to use in minutes.

Envision a networked home that's ready to ventilate, clean the air, and control cooking moisture and odor—automatically. A series of products in perfect cooperation. Intelligent Linking makes it happen. Only Best® makes it possible.



Shown: IP29 range hood using the exclusive custom trim kit lets you match your custom cabinetry.



- Seamless design with Pro-style features and performance
- Brushed Professional Grade stainless steel
- Brilliant halogen lighting with multiple settings
- 42" & 54" widths
- Powerful, quiet blowers
- Deep hood enclosure for excellent capture
- Evolution™ baffle filters with mesh filtration
- Four-speed LCD electronic control and filter change reminder
- Automatic Sensor Control; senses cooking for automatic operation
- Exclusive Intelligent Linking Technology allows communication with other enabled products
- Optional Remote Control
- Heat Sentry™ detects excessive heat and adjusts blower speed automatically
- Optional stainless steel flues
- Optional exclusive custom trim kit allows you to seamlessly unite drywall and paneling with the hood.

| Model | Width | Lamps* |
|-------|-------|--------|
| IP29  | 42"   | 6      |
|       | 54"   | 8      |

\* Six GU10 lamps in 42", eight GU10 lamps in 54" – included.

| Blower | CFM       | Finish                               | Availability |
|--------|-----------|--------------------------------------|--------------|
| INT♦   | 600, 1200 | Professional-grade brushed stainless | March 2008   |
| EXT♦   | 280–1500  |                                      |              |

♦ Blower purchased separately.

**best**

www.BestRangeHoods.com 926 W. State Street, Hartford, WI 53027 In U.S.A. call 800-558-1711 In Canada call 888-882-7626

